



Welcome



North Wind Wellness Centre

Assisting to achieve balance in life

COMMUNITY INFORMATION SESSION

16 May 2022

AGENDA

- Welcome and introductions
- Meeting purpose
- About North Wind Wellness Centre
- The need
- Design plan
- Implementation plan
- Question & answer period

PRESENTERS/ PANEL

- Isaac Hernandez, Executive Director, North Wind Wellness Centre
- Clayton, Pouce Coupe resident and former client
- Rob Turnbull, President & CEO, Streetohome Foundation
- Bill Kumlin, Principal, Kumlin Sullivan Architecture
- Michael Knudsen, Senior Project Manager, Kumlin Sullivan Architecture
- Leonard Hiebert, Area Director, Peace River Regional District
- Mukhtar Latif, Principal, Pomegranate Housing Consultancy

NWWC TRACK RECORD

- **Indigenous focused** not-for-profit and charity operating since 1996
- **Trauma-informed** treatment facility for Indigenous people struggling with substance use, dual diagnosis, lateral violence and the intergenerational impact of abuse, residential school, and post-traumatic stress disorder
- Current **10-bed facility** on 150 acres in Farmington, BC providing a 6-week in-patient addictions treatment program
- Helps **150 people** through its in-patient programs and 3,000 people through its day programs each year

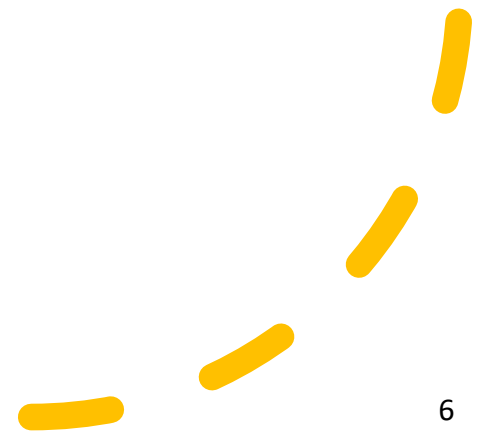
NWWC TRACK RECORD

- The Centre also offers **day programs** and **programming for youth at risk**, in collaboration with Indigenous local communities and School Districts in Dawson Creek and Fort St. John.
- **83% success rate** for the in-patient treatment program.
- NWWC programs have a **strong focus on traditional culture** including back-to-the-land programming. Ceremonies including sweat lodge, blanket, burning bundle, and pipe are part of the healing process and each day begins and ends with a smudge and prayer circle.



NWWC GRADUATE

- Meet Clayton



PROJECT VISION

- The **expanded facility** includes the ARCH elements of detox, addiction treatment, recovery supportive housing, and a recovery community centre.
- NWWC has carried out a **feasibility study** on developing an expanded facility
- We will employ 30 staff and provide opportunities for local volunteers to learn new skills and **support individuals, families, and communities**
- NWWC will operate social enterprises to provide vocational training opportunities that will **contribute to the local economy**

ARCH PROGRAM PARTNERS

- Institute for Sustainable Food Systems (ISFS) at **Kwantlen Polytechnic University** will provide NWWC with a business plan and a curriculum for a proposed agriculture program.
- ISFS has worked with First Nations in the Yukon, BC's northwest and lower mainland in developing Indigenous-focused agriculture programs
- **Northern Lights College** will partner on upgrading and technical/trades programs for ARCH participants
- NWWC partnered with **Force-Action in Development** to offer Specialized Programs such as Healing from Trauma

COMMUNITY BENEFITS

- **Employment Opportunities** – NWWC will be recruiting up to 20 new staff to fill positions that include maintenance and facilities.
- **Volunteer Opportunities** – NWWC will be looking for individuals with experience and expertise to support program participants to learn new skills for agricultural, and other training programs as well as social enterprises.
- **Wellness Hub** - First Nation Health Authority and Northern Health are key partners in this development. The design of the building is flexible to accommodate community programs that will be accessible to everyone.
- **Social Enterprises** – NWWC is developing strategies to sell agricultural products and utilize the commercial kitchen to help the Centre and its residents to be self-sufficient.

INCREASING DEMAND

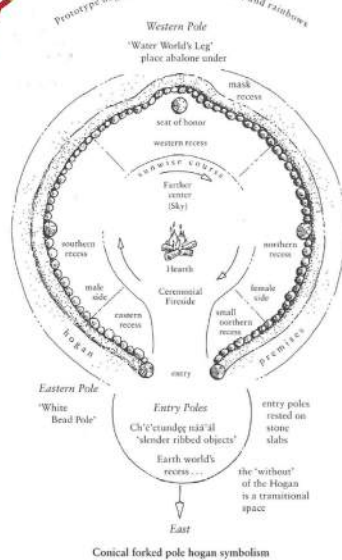
- More than **9,400** people in B.C. have died since declaring a public health emergency in 2016.
- Many of these deaths were **preventable**.
- There is limited local in-patient treatment capacity resulting in extended **wait times**.
- Waiting = **increased risk of death**.
- NWWC can **save lives** and help individuals build better futures.

PATHWAY TO HEALTH : ARCH MODEL





CONCEPT



"It was an age," writes the anthropologist Edmund Carpenter, "of extraordinary events and noble deeds, when men lived as equals with animals and mythic beasts, and the plan of raven and eagle, frog and beaver, thunderbird and whale established all that was to be. When depicting that reality, Northwest Coast artists often showed two beings simultaneously occupying a single space by sharing various parts. Such visual puns did more than express complexity; they depicted transformation. Before one's eyes, bear became wolf, then bear again. The image didn't change, of course. What changed was the observer's organization of its parts. **But the effect was one of transformation.**"

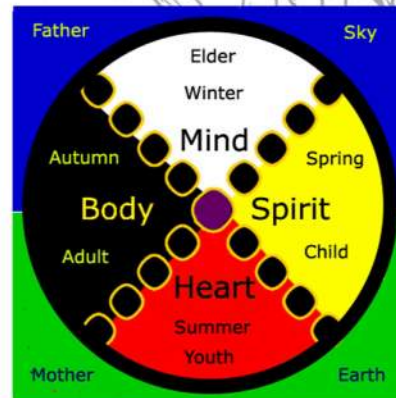
Nabokov, Peter, and Robert Olney Easton. Native American Architecture. Oxford University Press, 1989, Pg. 231 & all images this page.



• NATURAL MATERIALS



• EXPRESSION OF STRUCTURE

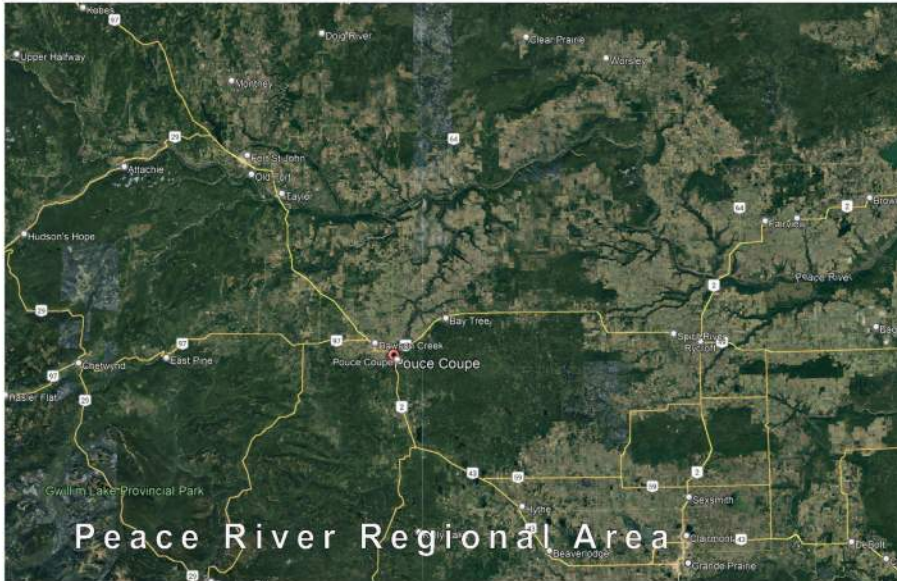


• FOCUS ON COMMUNAL SPACES

• CONNECTION FROM INHABITANTS TO CULTURE AND ENVIRONMENT



SITE LAYOUT



NWWC - POUCE COUPE CENTER
POUCE COUPE BC



NWWC - POUCE COUPE - SITE

KUMLIN | SULLIVAN
ARCHITECTURE STUDIO LTD.
310. 5819 - 2 STREET S.W., CALGARY, ALBERTA, T2H 0H3
PHONE: (403) 283-8361 FAX: (403) 252-7877

DRWG.
A1



NWWC - POUCE COUPE CENTER
POUCE COUPE BC



NWWC - POUCE COUPE SITE

KUMLIN | SULLIVAN
ARCHITECTURE STUDIO LTD.
310, 5819 - 7 STREET S.W., CALGARY, ALBERTA, T2H 0H3
Phone: (403) 283-8361 Fax: (403) 252-7877

DRWG.
A1.1

FIRST FLOOR



NWWC - POUCE COUPE CENTER
POUCE COUPE BC

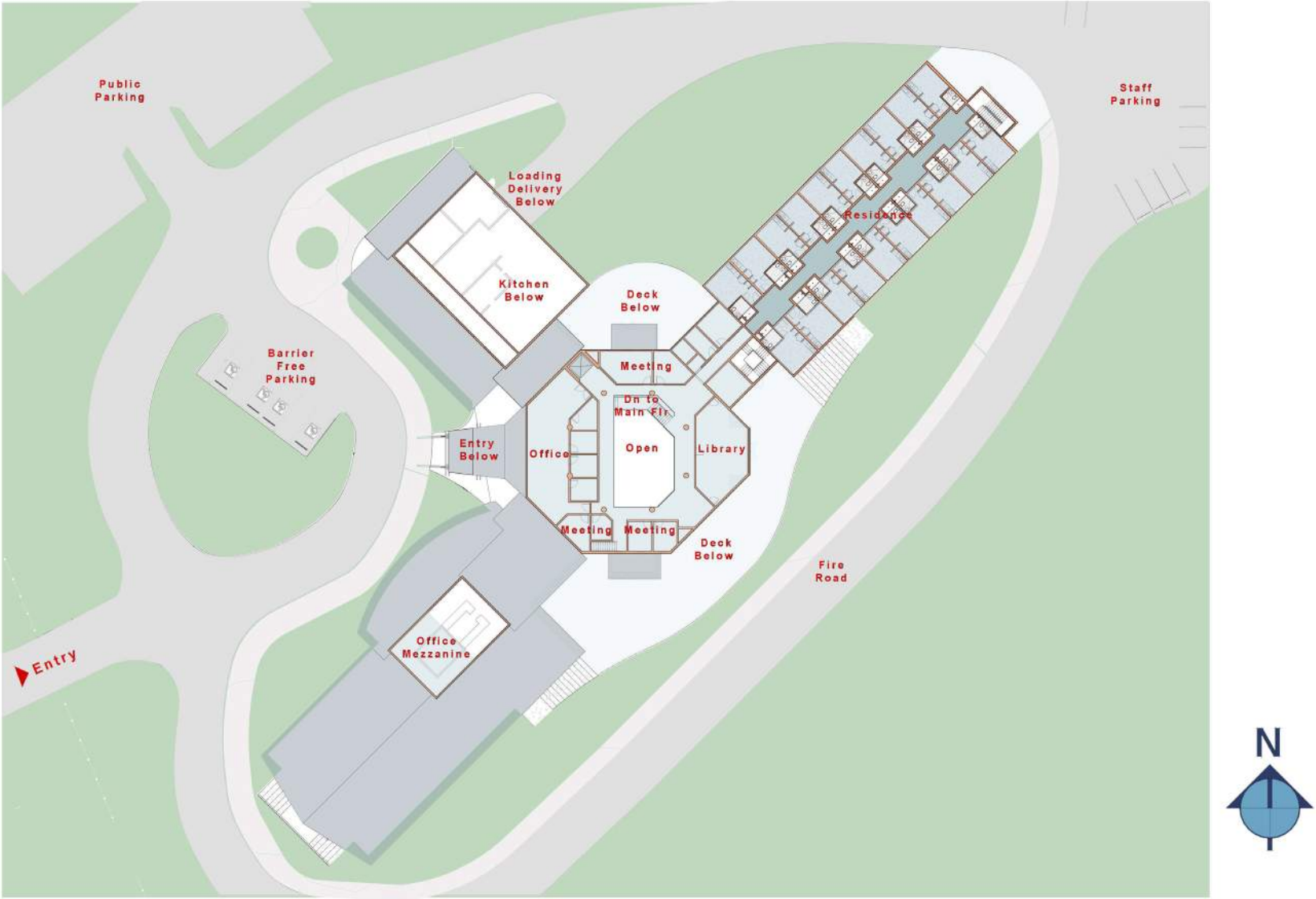


NWWC - POUCE COUPE FLOOR PLAN

KUMLIN SULLIVAN
ARCHITECTURE STUDIO LTD.
310, 5819 - 2 STREET S.W., CALGARY, ALBERTA, T2H 0H3
PHONE: (403) 283-8361 FAX: (403) 252-7877

DRWG.
A3

SECOND
FLOOR



NWWC -POUCE COUPE CENTER
POUCE COUPE BC



NWWC - POUCE COUPE - SECOND FLOOR PLAN

KUMLIN SULLIVAN
ARCHITECTURE STUDIO LTD.
310, 5819 - 2 STREET S.W., CALGARY, ALBERTA, T2H 0H3
PHONE: (403) 283-8361 FAX: (403) 252-7877

DRWG.
A4



DESIGN



Driveway Entry at Highway 2



Driveway Entry Aerial View



Main Entrance



Main Entrance Aerial View

NWWC - POUCE COUPE CENTER
POUCE COUPE BC



NWWC - POUCE COUPE EXTERIOR RENDERINGS

KUMLIN SULLIVAN
ARCHITECTURE STUDIO LTD.
310, 5819 - 2 STREET S.W., CALGARY, ALBERTA, T2H 0H3
PHONE: (403) 283-8361 FAX: (403) 252-7877

DRWG.
A5



Aerial View from North



Aerial View from NE



South View



South View at Fire Road

NWWC - POUCE COUPE CENTER
POUCE COUPE BC



NWWC - POUCE COUPE EXTERIOR RENDERINGS

KUMLIN SULLIVAN
ARCHITECTURE STUDIO LTD.
310, 5819 - 2 STREET S.W., CALGARY, ALBERTA, T2H 0H3
PHONE: (403) 283-8361 FAX: (403) 252-7877

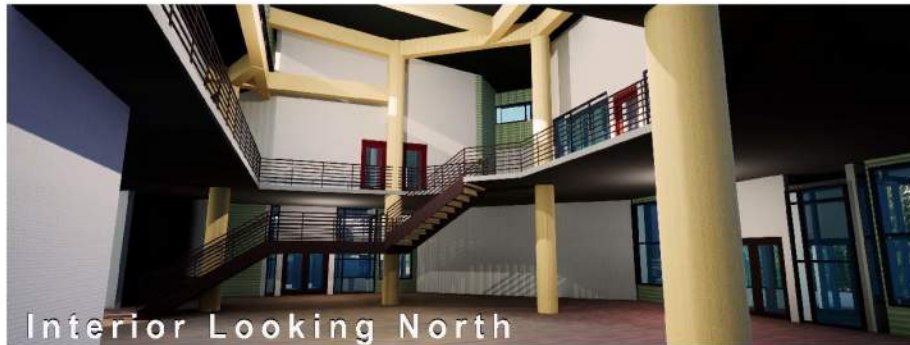
DRWG.
A6



Building Entry at Reception



Interior Looking South



Interior Looking North



NWWC - POUCE COUPE INTERIOR RENDERINGS

KUMLIN | SULLIVAN
ARCHITECTURE STUDIO LTD.
310, 5619 - 2 STREET S.W., CALGARY, ALBERTA, T2H 0H3
PHONE: (403) 283-8361 FAX: (403) 252-7877

DRWG.
A7

NWWC - POUCE COUPE CENTER
POUCE COUPE BC

NWWC ARCH PARTNERS

